

Voice-O-Matic 2

Di-O-Matic has released an upgrade to its popular lip-sync package. But are the new features something to shout about or just a load of waffle?

BY CHRIS OLLIS

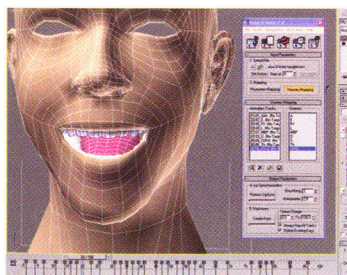


oice-O-Matic, originally reviewed in Issue 38, is an easy-to-use yet powerful lip-sync plug-in for 3ds Max. It works by analysing audio files and identifying 'visemes' (mouth shapes created to make specific noises) which it uses to drive morph targets, keyframing as it goes. The bright and simple interface and standard Max workflow provide a very efficient format that you'll feel right at home with.

The new release doesn't boast any groundbreaking new features – which isn't entirely surprising, considering the original did everything so well. But it does have enough tweaks to keep the software up to date and warrant the minimal upgrade price for existing users.

The most notable adjustment to the package is an Intensity scroller for each

viseme which lets you adjust how subtle or extreme each face shape is. Beyond this there is support for the LWV audio format (which adds text data to audio tracks for more precise speech recognition), audio tags for each viseme so that you can be sure you are picking the correct sound, simplified viseme mapping and the ability



● Working as standard Max morpher animation, Voice-O-Matic is an easy-to-use plug-in that you feel familiar with right from the start

to use the Max 8 keyframe tangent type on all the Voice-O-Matic produced keys.

Compared with its competitors, Voice-O-Matic 2 does very well. Functionality and ease of use set it very high to begin with, but it is its solid incorporation into the Max workflow that gives it the edge over its nearest rival, Magpie Pro. ●

VERDICT

PROS

- Easy to use
- Incredible time saver
- Great deal of control

CONS

- Works with morph targets only, not bone systems

RANGE OF FEATURES

8

VALUE FOR MONEY

8

OVERALL

9



DETAILS

PRICE

• £188* / \$349 / €274*

*Currency conversion

PLATFORM

PC

RECOMMENDED SYSTEM

- Any system capable of running 3ds Max 6+

MAIN FEATURES

- Fast and effective morph-based lip-sync tool
- Excellent integration with 3ds Max
- Additional compatibility for 3ds Max 8

DEVELOPER

Di-O-Matic

WEBSITE

www.voice-o-matic.com